



4 PINES BREWING CO.

FOREWORD

TO OUR SUPPORTERS, OUR SUPPLIERS, OUR CUSTOMERS, OUR MATES...

WE RECKON YOU'RE A BIT OF A LEGEND.

BY TAKING THE SIMPLEST OF ACTIONS, YOU'RE HELPING US CREATE POSITIVE CHANGE.

YOU BOUGHT A CASE OF BEER. WHICH IS A HUGE DEAL, BECAUSE YOU'VE SET IN MOTION A CHAIN OF EVENTS THAT MIGHT JUST MAKE THE WORLD A BETTER PLACE. YEAH, IT SOUNDS WEIRD, BUT IT'S NOT. YOU SEE YOU'VE ALLOWED US TO KEEP DOING GOOD STUFF.

IN FACT, PEOPLE LIKE YOU HAVE HELPED US EVERY STEP OF THE WAY, AND TOGETHER WE'RE ACHIEVING A LOT. BECAUSE OF OUR BEER LOVERS, WE'RE USING CLEANER ENERGY, WE'VE PLANTED HEAPS OF TREES, HELPED CHARGE EV'S AND TAKE CARE OF OUR BEES. ALL THIS AND MUCH MORE. SO HOW ABOUT THIS, YOU DRINK THIS BEER, AND WE'LL DO SOMETHING REALLY GOOD IN RETURN. SIT BACK, RELAX AND BASK IN A GLOW OF INNER SATISFACTION KNOWING THAT BY DOING SO LITTLE YOU'VE DONE SO MUCH. WE THINK YOU DESERVE A BEER.

KEEP UP THE GOOD STUFF.

the 4 Pines team



YOU DRINK THE
BEER, WE'LL DO THE
GOOD STUFF.



44,000 TREES
PLANTED

CONTENTS



04
OUR STORY
SO FAR

05
OUR
BEER

06
OUR IMPACT
MANIFESTO

07
A WORD FROM
OUR CAPTAIN

08
44,444 TREES
PLANTED

12
PROUDLY BCORP
CERTIFIED

13
1% FOR THE
PLANET MEMBER

14
SPENT GRAIN
DIVERTED

15
SOLAR
INSTALLED

16
RENEWABLE POWER
PURCHASING

17
ELECTRIC VEHICLE
CHARGING

18
GOOD BEER THAT
GIVES BACK

22
WE'RE A GREAT
PLACE TO WORK

25
HOSPITALITY &
COMMUNITY

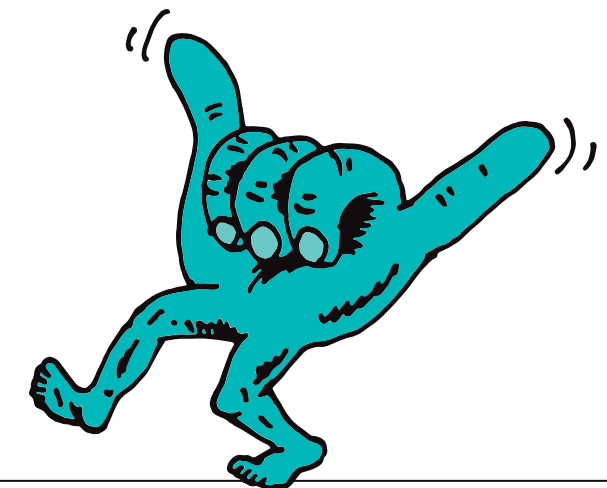
28
WE'RE ON A
JOURNEY



44,000 TREES
PLANTED



MEMBER



OUR STORY SO FAR



WHERE IT BEGAN

4 PINES WAS BORN FOLLOWING A POST SURF CHAT BETWEEN FATHER AND SON.

THIS WAS BACK IN '06. A WHOLE LOT HAS HAPPENED SINCE WE FIRST OPENED OUR MICROBREWERY IN MANLY IN 2008. BUT SOME THINGS WILL NEVER CHANGE, WE CONTINUE TO MAKE QUALITY, AWARD WINNING BEERS THAT WE WANT TO DRINK AND THAT OUR MATES ARE PROUD OF.

OUR COMMITMENT TO USING BUSINESS AS A FORCE FOR GOOD IS AS STRONG TODAY AS IT WAS IN THE BEGINNING, WE'RE ON A CONTINUOUS JOURNEY TO DO GOOD STUFF, CONSIDERING OUR PEOPLE, OUR PLANET & OUR COMMUNITY.

THANKS TO OUR TEAM

THE STORIES WITHIN THESE PAGES SHARE A LOT OF THE GOOD STUFF WE'VE ACHIEVED OVER THE YEARS. IT'S NOT NECESSARILY IN ORDER OF OCCURRENCE & IT'S A MEANDERING TALE, BUT HOPEFULLY IT INSPIRES YOU TO REFLECT ON THE GOOD STUFF YOU DO, & HOW COLLECTIVELY IT CAN ALL ADD UP TO GREAT STUFF.

THIS WILL BE A DYNAMIC REPORT, DOCUMENTING AND CELEBRATING THE PROJECTS OUR TEAM DELIVER.

ALL OF THIS IS MADE POSSIBLE BECAUSE OF OUR PEOPLE. WE HAVE SUCH A GREAT BUNCH OF INSPIRED, PASSIONATE AND EPIC HUMANS WITH A DESIRE TO DO GOOD STUFF DAY IN DAY OUT. THANK YOU, LEGENDS!

WE TAKE WHAT WE DO SERIOUSLY, BUT NOT OURSELVES & WE HAVE FUN WHILE WE DO IT!

OUR BEER

IN A NUTSHELL, WE MAKE BEER WE WANT TO DRINK & OUR MATES ARE PROUD OF & WE HAVE FUN DOING IT...

AND IT JUST SO HAPPENS ENJOYING WHAT YOU DO MAKES FOR A PRETTY EXCEPTIONAL END RESULT. AT THE END OF THE DAY, WE'RE NOT SAVING LIVES, WE'RE MAKING BEER.

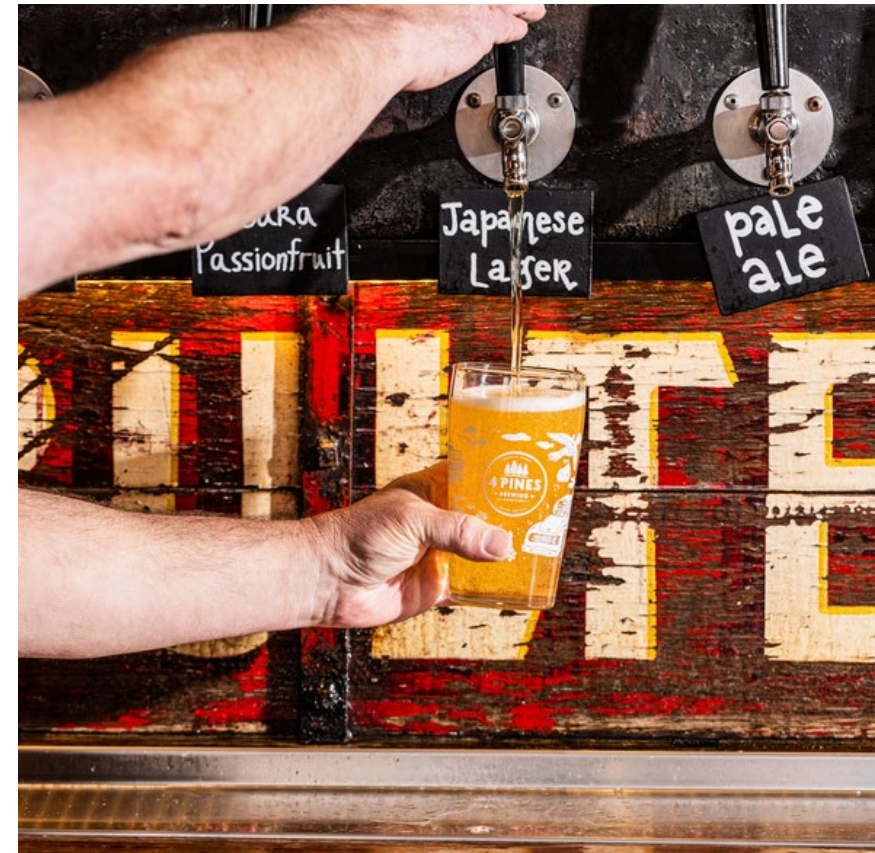
OUR BREW TEAM IS MADE UP OF SUPERSTARS WHO ARE PASSIONATE ABOUT DELIVERING QUALITY BEER TO AUSSIE BEER LOVERS. WE'RE PRETTY WELL-KNOWN NOW AS A STYLE BREWER, MEANING WE DON'T HAVE JUST ONE OR TWO KILLER BEERS - BUT A WHOLE CATALOGUE OF INTERNATIONAL & LOCALLY AWARD-WINNING BEERS FOR FROTHERS TO WRAP THEIR TASTEBUDS AROUND.

WE HAVE RIDICULOUSLY HIGH LEVELS OF QUALITY CONTROL. 5 DAYS A WEEK AT 11:30AM YOU'LL FIND DEDICATED EMPLOYEES FROM ACROSS ALL OUR DEPARTMENTS ASSESSING THE BEER IN OUR DAILY BEER SENSORY. IT IS A TOUGH GIG BUT WE'RE COMMITTED TO DELIVERING THE BEST & FRESHEST, SO WE'LL DO IT, (IF WE HAVE TO).

WE'VE BEEN AWARDED FOR OUR BEERS OVER & OVER AGAIN, RIDICULOUS AMOUNTS, WE LOVE THE RECOGNITION - IT MEANS OUR REASON FOR BEING, MAKING GOOD BEER, IS STILL ALIVE & WELL.

INNOVATION IS IN OUR DNA, AND OUR BREWERS HAVE A CREATIVE LICENSE ACROSS OUR BREWPUBS TO EXPERIMENT, DELIVER A HUGE VARIETY OF STYLES AND ADOPT INNOVATIVE BREWING PRACTICES TO KEEP BOTH OUR TEAM & BEER LOVERS BEER-DRINKIN' LIVES INTERESTING.

CHEERS TO THAT!

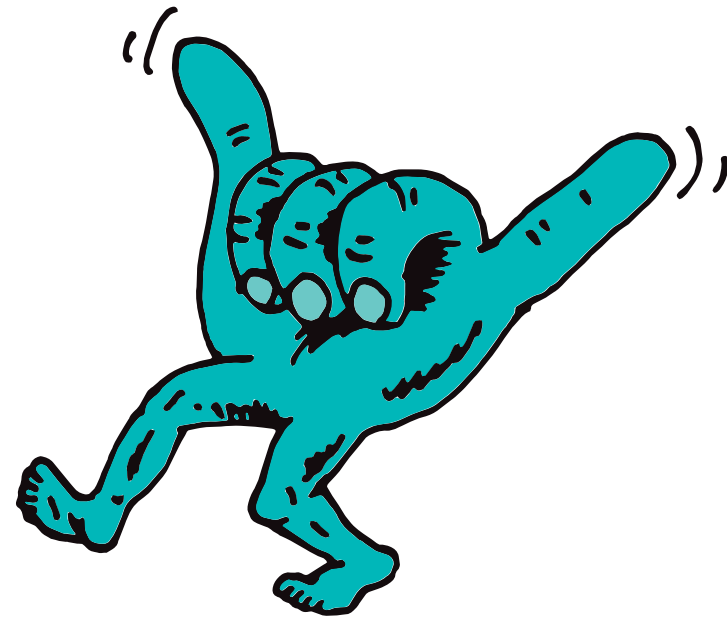


OUR IMPACT MANIFESTO

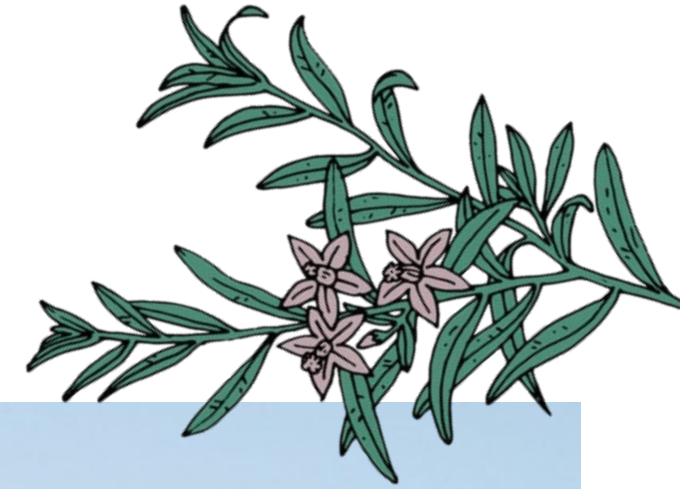
UNTIL THE END OF TIME, WE ARE COMMITTED TO 'BREW BETTER' CONSIDERING THE IMPACT OUR BUSINESS HAS ON THE PLANET, PEOPLE, AND THE COMMUNITY.

4 PINES IS ON A JOURNEY WITH FAMILY, FRIENDS AND THE COMMUNITY TO RESTORE THE FUN IN PEOPLE'S LIVES AND FOREVER CHALLENGE WHAT THE WORLD IMAGINES BUSINESS SHOULD BE. THAT'S WHY TAKING RESPONSIBILITY FOR OUR IMPACT IS SUCH AN IMPORTANT PART OF OUR BUSINESS.

AS A B CORP CERTIFIED COMPANY WE USE 'BUSINESS AS A FORCE FOR GOOD' & CONSIDER THE STAKEHOLDERS WHEN MAKING DECISIONS. WE COMMIT TO HAVING AN OVERALL POSITIVE IMPACT ON SOCIETY & THE ENVIRONMENT.



A WORD FROM OUR CAPTAIN



BREW BETTER IS OUR COMMITMENT TO DO GOOD BY OUR PLANET, OUR PEOPLE AND THE COMMUNITY. THIS PHILOSOPHY IS INGRAINED IN OUR COMPANY CULTURE AND SHAPES DECISION MAKING ACROSS THE TEAM – IT'S JUST HOW WE ROLL.

AT 4 PINES BREWING COMPANY WE'RE PROUD OF OUR HISTORY OF ESTABLISHING INDUSTRY LEADING INITIATIVES ACROSS OUR BUSINESS. WE HAVE BEEN RECOGNISED AS A GREAT PLACE TO WORK FOR OUR EMPLOYEE EXPERIENCE AND WE ACTIVELY SUPPORT LOCAL COMMUNITIES WHERE WE OPERATE.

WE HAVE IMPLEMENTED INNOVATIVE TECHNOLOGIES ACROSS OUR BREWING OPERATIONS, WHICH HAVE ALLOWED US TO BE ON THE FRONTIER OF REDUCING THE ENVIRONMENTAL FOOTPRINT OF THE BREWING INDUSTRY WITHIN AUSTRALIA, AND WE MAKE SURE WE ARE HAVING FUN WHILST WE DO IT.

WE ARE ON A CONTINUOUS JOURNEY OF LEARNING AND IMPROVEMENT; WE'RE STOKED THAT ALONG THE WAY WE HAVE INSPIRED OTHERS TO REIMAGINE HOW THEY DO BUSINESS TOO.

WE ARE PROUD OF THE GOOD STUFF WE HAVE ACHIEVED IN COLLABORATION WITH LOCAL COMMUNITIES AND OUR PARTNERS, BUT THERE IS LOTS MORE TO DO! WANT TO KNOW WHAT WE'RE DOING ABOUT THIS?

COME CHECK IT OUT...

Todd Atkinson

TODD ATKINSON, CEO



44,444 TREES PLANTED

WE'VE TEAMED UP WITH LANDCARE AUSTRALIA TO PLANT 44,444 TREES, SHRUBS AND GROUNDCOVERS EACH YEAR UNTIL 2025.

OUR TREE-PLANTING ESCAPADES ARE IN THE HANDS OF THE ULTIMATE GREEN THUMBS. LANDCARE AUSTRALIA ARE NATURE-WHISPERING EXPERTS. THEY'VE BEEN IN THIS GAME FOR 35 YEARS, WITH OVER 6,000 LOCAL COMMUNITY GROUPS SCATTERED LIKE SEEDS ACROSS THE AUSSIE LANDSCAPE AND A VOLUNTEER ARMY THAT'S 140,000 STRONG.

LANDCARE HAVE A TEAM OF EXPERTS CAREFULLY SELECTING AND PLANTING SPECIES, ENSURING THAT EVERY SAPLING, SHRUB, AND BLADE OF GRASS WE THROW INTO THE GROUND WILL BE RECEIVING VIP TREATMENT, NURTURED FOR YEARS TO COME TO CREATE A REGENERATIVE LEGACY THAT'LL OUTLAST YOUR FAVORITE PAIR OF SNEAKERS.

OUR GREEN AMBITIONS INCLUDE ENHANCING LANDSCAPE CONNECTIVITY, PROMOTING BIODIVERSITY, AND OFFERING LONG-TERM HABITAT FOR ENDANGERED SPECIES. IT'S A WIN FOR THE ENVIRONMENT AND A NOD TO THE CRITTERS WHO NEED A COZY SPOT TO CALL HOME.



KEEN TO LEARN MORE ABOUT VOLUNTEERING WITH YOUR LOCAL LANDCARE GROUP TO DO GOOD STUFF IN YOUR LOCAL COMMUNITY? HEAD TO LANDCARE AUSTRALIA'S WEBSITE & SEARCH FOR GROUPS IN YOUR REGION.



TREE PLANTING PROJECTS TO DATE

RYEFIELD HOP FARM, BEMBOKA, NSW

DURING '21 & '22 3000 NATIVE TREES, SHRUBS & GROUNDCOVERS WERE PLANTED ALONG THE CREEK BED AT OUR GOOD MATES REGENERATIVE RUN, FAMILY-OWNED HOP FARM, RYEFIELD HOPS.

IN TIME, THIS WILL PROVIDE A CORRIDOR FOR NATIVE FAUNA AND A PLACE WHERE NUTRIENTS CAN BE CAPTURED BY THE LOCAL LANDSCAPE INSTEAD OF BEING WASHED DOWN THE RIVER AND TOWARDS THE OCEAN.

IT WILL ALSO ENCOURAGE WILDLIFE AND INSECTS BACK TO THE LOCAL AREA TO PROTECT THE HOP FARM FROM PESTS THAT MAY AFFECT HOP YIELDS, HELP TO IMPROVE SOIL HEALTH AND PROTECT THE CROP FROM DISEASES SUCH AS MILDEW.



CAPE JERVIS, SOUTH AUSTRALIA

IN 2022, 44,444 TREES, SHRUBS & GROUNDCOVERS WERE PLANTED IN CAPE JERVIS.

OVER TIME MUCH OF THE NATIVE VEGETATION ALONG THE SOUTH AUSTRALIAN COASTLINE HAS BEEN REMOVED. THE GLOSSY BLACK COCKATOO, ONCE ENDEMIC TO THE SOUTH AUSTRALIAN COASTLINE, RETREATED TO KANGAROO ISLAND & THE SPECIES HAS BEEN LISTED AS ENDANGERED.

AN AREA SPANNING ALMOST 100 ACRES WAS SEEDED WITH THEIR MAIN FOOD SOURCE, DROOPING SHEOAK TREES & UNDERSTORY PLANTS. THIS PLANTING WILL ENHANCE LANDSCAPE CONNECTIVITY, IMPROVE BIODIVERSITY & CREATE NATURAL HABITAT FOR THE GLOSSY BLACK COCKATOO.



WESTGATE, MELBOURNE

IN '23, DURING A VOLUNTEER DAY, 462 SHRUBS AND TREES WERE PLANTED WITH 105 VOLUNTEER HOURS RACKED UP!

BILI NURSERY & LANDCARE INC. IS A COMMUNITY-BASED ORGANISATION WORKING TO IMPROVE THE INNER MELBOURNE ENVIRONMENT AND ITS BIODIVERSITY WITH LOCALLY INDIGENOUS VEGETATION. SINCE 1996 THEY HAVE BEEN TRANSFORMING WESTGATE PARK FROM A NEGLECTED PARK TO A NATURAL BUSHLAND LANDSCAPE USING 320 LOCALLY INDIGENOUS PLANT SPECIES.

THE ASAHI AND 4 PINES TEAM WORKED ALONGSIDE LONG-TERM LANDCARE VOLUNTEERS, ESTABLISHING 462 SHRUB AND TREE PLANTS ALONG A FENCE LINE TO CREATE A NEW BOUNDARY FOR THE PARK.



BILLABONG FARM, INVERELL, NSW

IN '23 STAGE 1 WAS COMPLETE - WITH 580 TREES, SHRUBS & GROUNDCOVERS PLANTED SO FAR.

THE GOAL - TRANSFORMING 1330 HECTARES OF HABITAT BY STITCHING TOGETHER A VIBRANT TAPESTRY OF VEGETATION COMMUNITIES.

SOON WE'LL BE UNLEASHING OVER 45,000 SEEDLINGS, AND IN TIME THIS WILL CREATE A LIFELINE TO THREATENED SPECIES INCLUDING THE KOALA, SPOTTED-TAIL QUOLL AND THE REGENT HONEYEATER.

UNFORTUNATELY, EL NIÑO BADLY IMPACTED THIS REGION, SO TO ENSURE A SUCCESSFUL PLANTING, STAGE 2 WILL TAKE PLACE DURING AUGUST '24 WHEN THE SOIL IS HYDRATED, THE DAMS HAVE ADEQUATE WATER STORAGE & CHANCE OF RAIN IS HIGHER.



TRIES FOR TREES

WE'VE GIVEN THE MANLY WARRINGAH SEA EAGLES SOME EXTRA MOTIVATION, COMMITTING TO PLANT 100 NATIVE TREES, SHRUBS AND GROWDCOVERS FOR EVERY TRY SCORED (UP TO 44,444).

THIS INITIATIVE WAS BORN THROUGH CONVERSATIONS BETWEEN 4 PINES AND THE MANLY WARRINGAH SEA EAGLES. 4 PINES ARE PROUD TO BE THE OFFICIAL BEER OF THE SEA EAGLES AND NAMING RIGHTS PARTNERS OF THEIR ICONIC HOME GROUND, 4 PINES PARK.

THE TREE PLANTING IS FACILITATED BY LANDCARE AUSTRALIA AND WE WERE STOKED TO ABLE TO CONNECT TWO OF OUR KEY PARTNERS IN SERVICE OF DOING GOOD STUFF.

THE INTENT OF THE PARTNERSHIP HAS ALWAYS BEEN ABOUT BRINGING PEOPLE TOGETHER THROUGH MATESHIP, FRESH BEER AND GOOD TIMES AT THE FOOTY AND WILL NOW EVOLVE TO MAKE A POSITIVE IMPACT.

SEA EAGLES CAPTAIN & HALF-BACK, DALY CHERRY EVANS, SAID "THIS IS A GREAT INITIATIVE FROM 4 PINES AND LANDCARE AUSTRALIA AND ONE WE ARE VERY PROUD TO BACK."



DURING THE '23 SEASON WE COMMITTED TO PLANTING 9,400 TREES, SHRUBS & GRASSES. NOW THAT'S GOOD FOOTY...

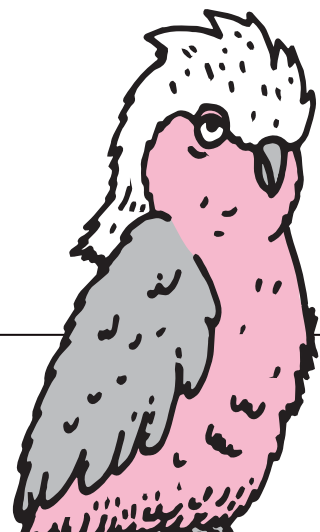
PROUDLY B CORP CERTIFIED

WHAT IS B CORP?

Certified



Corporation



IT'S NOT JUST A CERTIFICATION; IT'S A COMMITMENT TO BEING A LEADER IN A GLOBAL MOVEMENT FOR AN ECONOMY THAT'S INCLUSIVE, EQUITABLE, AND REGENERATIVE. CONSIDER IT THE GOLD STANDARD IN THE ESG (ENVIRONMENT, SOCIAL, GOVERNANCE) SPACE – GLOBALLY RECOGNISED AND CELEBRATED.

NOW, LET'S TALK PROCESS. B CORPS DON'T JUST SIGN UP FOR A CERTIFICATE; THEY GO THROUGH A THOROUGH IMPACT ASSESSMENT AND AUDITING PROCESS. WE ANSWER 250 QUESTIONS, COVERING THE FIVE IMPACT AREAS OF ENVIRONMENT, WORKERS, CUSTOMERS, COMMUNITY, AND GOVERNANCE.

IT'S A METICULOUS JOURNEY WHERE COMPANIES NEED TO PRESENT SOLID EVIDENCE TO SUBSTANTIATE THEIR CLAIMS.

TO EARN THE B CORP BADGE, A COMPANY MUST ACHIEVE A VERIFIED SCORE OF 80 POINTS OR MORE – A TESTAMENT TO THEIR DEDICATION TO MAKING A POSITIVE IMPACT. THEY EVEN UPDATE THEIR CONSTITUTION, LEGALLY COMMITTING TO HAVING AN OVERALL POSITIVE INFLUENCE ON SOCIETY AND THE ENVIRONMENT.

BUT HERE'S THE CATCH – THE WORK DOESN'T STOP THERE. RECERTIFICATION IS REQUIRED EVERY THREE YEARS, KEEPING UP WITH NEW SCIENTIFIC RESEARCH AND EVOLVING BEST PRACTICES. IT'S A CONTINUOUS JOURNEY OF IMPROVEMENT, WHERE THERE'S NO FINAL DESTINATION, JUST AN ONGOING COMMITMENT TO DOING BETTER.

B CORPS ARE BUSINESSES THAT ARE SERIOUS ABOUT BEING A FORCE FOR GOOD.

ARE YOU A BUSINESS INTERESTED IN BECOMING A 'B CORP'? FEEL FREE TO REACH OUT TO US:

GOODSTUFF@4PINESBEER.COM.AU

2022 B IMPACT ASSESSMENT

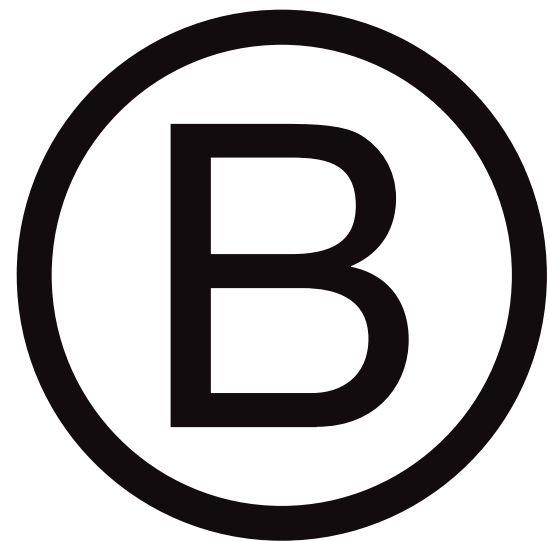
B CORP IMPACT AREA	4 PINES
GOVERNANCE	14.2
WORKERS	23.3
ENVIRONMENT	24.4
COMMUNITY	18.8
CUSTOMERS	2.9
OVERALL SCORE	83.8

OUR B CORP JOURNEY

WE ARE PROUDLY B CORP CERTIFIED WHICH MEANS WE STICK TO HIGH SOCIAL & ENVIRONMENTAL STANDARDS. BY CHOOSING 4 PINES YOU'RE SUPPORTING A BUSINESS THAT CARES ABOUT PEOPLE & PLANET.



Certified



®

Corporation

FLASHBACK TO 2015 - SEVEN YEARS INTO OUR JOURNEY, AND OUR FOUNDER CATCHES WIND OF SOMETHING GAME-CHANGING: B CORP CERTIFICATION. IT WAS LIKE STUMBLING UPON A SECRET SOCIETY FOR BUSINESSES THAT WANT TO DO RIGHT BY THE WORLD.

IN 2015, WE TOOK THE PLUNGE AND COMMITTED TO BECOMING A B CORP. WHY? WELL, WE WANTED TO STICK TO THE VALUES THAT MADE 4 PINES WHAT IT IS, AS A GROWING BUSINESS OPENING MORE HOSPITALITY VENUES, AND BREWING MORE BEER & GROWING OUR FOOTPRINT, IT WAS IMPORTANT WE DIDN'T LOSE TRACK OF THE THINGS THAT MATTER.

OUR MANTRA'S SIMPLE - 'DO THE RIGHT THING'. WHETHER IT'S LOOKING OUT FOR OUR PEOPLE, SUPPORTING OUR COMMUNITIES, OR MAKING CHOICES THAT GIVE THE PLANET A BREAK.

BY 2017, WE OFFICIALLY JOINED THE B CORP FAMILY, AND IT WASN'T ABOUT MAKING HEADLINES; IT WAS ABOUT LIVING OUR VALUES.

SINCE THEN, WE'VE FOUND OURSELVES IN THE 'B CORP - BEST FOR THE WORLD - ENVIRONMENT' SPOTLIGHT - NOT ONCE, NOT TWICE, BUT FOUR TIMES: IN 2018, '19, '21, AND '22.

TODAY WE'RE PART OF A GLOBAL CREW OF OVER 7800 & GROWING B CORPS. BEING A B CORP IS MORE THAN A CERTIFICATION; IT'S A COMMITMENT TO MAKING THE WORLD A BIT BETTER, ONE SIP AT A TIME!

WE GET IT, BEER ALONE ISN'T GOING TO SAVE THE PLANET. BUT WE HAVE SOME WAYS TO MAKE EVERY SIP A STEP TOWARDS MAKING A POSITIVE IMPACT. AND HOPEFULLY ALONG THE WAY WE'LL INSPIRE OTHERS TO REIMAGINE HOW THEY DO BUSINESS TOO.

WE ARE PROUD OF OUR ACHIEVEMENTS TO DATE, BUT THERE IS LOTS MORE TO DO.

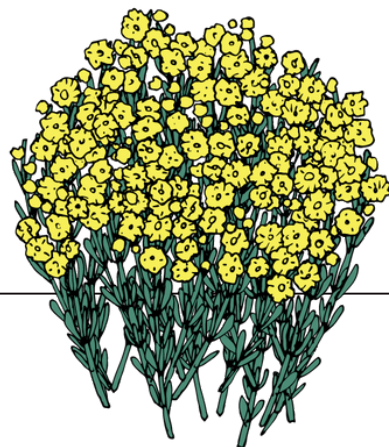
1% FOR THE PLANET MEMBER

1% FOR THE PLANET IS OUR COMMITMENT TO SUPPORT OTHERS WHO ARE DOING GOOD STUFF!



"THIS IS NOT PHILANTHROPY. THIS SHOULD BE A COST OF DOING BUSINESS. IT'S PAYING RENT FOR OUR USE OF THE PLANET."

YVON CHOUINARD
(FOUNDER OF PATAGONIA AND
1% FOR THE PLANET)



WE BELIEVE THAT COLLECTIVE CHANGE IS POWERFUL. TOGETHER 1% FOR THE PLANET MEMBERS HAVE GIVEN A COOL \$535 MILLION AND COUNTING TO NON-PROFIT ENVIRONMENTAL ORGANISATIONS COMMITTED TO HELPING THE FUTURE OF OUR PLANET.

1% OF NET SALES REVENUE FROM EVERY 4 PINES BEER, WHETHER IT'S IN A BOTTLE, CAN OR KEG, GOES STRAIGHT INTO THE ECO-WARRIOR FUND, A STRAIGHTFORWARD PLEDGE TO DO OUR BIT FOR THIS PLANET WE CALL HOME.



SINCE 2020 VIA 1% FOR THE PLANET WE HAVE SUPPORTED THE FOLLOWING ORGANISATIONS TO DO GOOD;

1% FOR THE PLANET EVERY DOLLAR IS INVESTED OR GRANTED FOR MAXIMUM POSITIVE IMPACT FOR THE PLANET & PEOPLE.

TAKE 3 FOR THE SEA ON A MISSION TO RID PLASTIC FROM OUR OCEANS.

ORGANIC MATTERS FOUNDATION EDUCATING FARMERS ON REGENERATIVE AND ECOLOGICAL FARMING PRACTICES IN THE PACIFIC & AUSTRALIA.

ENOVA COMMUNITY ENERGY ASSISTING COMMUNITY GROUPS TO INSTALL SOLAR PANELS ON THEIR ROOFTOPS THROUGH OUR BEN & JERRY'S GOOD BEER THAT GIVES BACK COLLAB.

LANDCARE AUSTRALIA ACTIVELY CARING FOR THE LAND & WATER THAT SUSTAINS US, LIKE PLANTING 44,444 TREES EVERY YEAR.

SEAFORST FOUNDATION HELPING TO RESTORE & PROTECT THE GIANT KELP FORESTS OF TASMANIA'S WATERS. THROUGH OUR SEA FOREST GOOD BEER THAT GIVES BACK COLLAB.

SPENT GRAIN DIVERTED FROM HQ

BREWER'S SPENT GRAIN: A COW'S DESSERT. MOO-VE ON OVER, SPENT GRAINS ARE HEADED STRAIGHT TO THE CATTLE YARD!

WE'RE UDDERLY DELIGHTED TO SHARE, WE'RE GIVING A SECOND LIFE TO OUR BREWERS SPENT GRAIN FROM OUR BROOKVALE HQ, BY TURNING IT INTO A FEAST FOR CATTLE. BY DIVERTING OUR SPENT GRAIN FROM LANDFILL, WE'RE SLASHING OUR WASTE, WHICH IN TURN HELPS TO REDUCE OUR CARBON HOOFPRINT.

OUR SPENT GRAIN IS COLLECTED AND DISTRIBUTED TO A FARMER ON THE MID NORTH COAST OF NSW. THE CATTLE THAT MUNCH ON OUR SPENT GRAIN BECOME THE UNSUNG HEROES OF SUSTAINABILITY. THEY'RE PART OF A CYCLE THAT TRANSFORMS WASTE INTO SOMETHING USEFUL.



DURING 2023 WE TEAMED UP WITH SEA FOERST & OTHER "STEAK-HOLDERS" TO INVESTIGATE HOW SEAFORREST METHANE BUSTING CATTLE SUPPLIMENT COULD BE ADDED TO SPENT BREWERS GRAIN. THIS IS A LONG-TERM PROJECT & WE HOPE TO SHARE DEVELOPMENTS IN THE FUTURE.

SOLAR INSTALLED

100KW SOLAR INSTALLED AT BROOKVALE HQ TAKING OUR COMMUNITY ON THE JOURNEY WITH US...

BACK IN 2018, WE DECIDED TO GIVE OUR BROOKVALE HEADQUARTERS A SOLAR-POWERED MAKEOVER – 100 KILOWATTS TO CAPTURE PURE SUNSHINE!

WE DIDN'T JUST WANT TO BASK IN THE GLOW OURSELVES; WE WANTED OUR MATES TO JOIN THE SOLAR PARTY TOO. SURE, WE COULD'VE SLAPPED THOSE SOLAR PANELS UP OURSELVES, BUT LET'S FACE IT – THEY CAME WITH A PRICE TAG THAT MADE US DO A DOUBLE-TAKE. SO, WE GOT CREATIVE, AND LET THE COMMUNITY INVEST IN OUR SOLAR DREAMS.

TEAMING UP WITH AUSSIE SOLAR GURUS PINGALA AND CLEARSKY SOLAR INVESTMENTS, WE THREW OPEN THE INVESTMENT DOORS, CALLING ON OUR EMPLOYEES, FELLOW BEER LOVERS, AND THE LOCAL COMMUNITY TO GET IN ON THE ACTION.

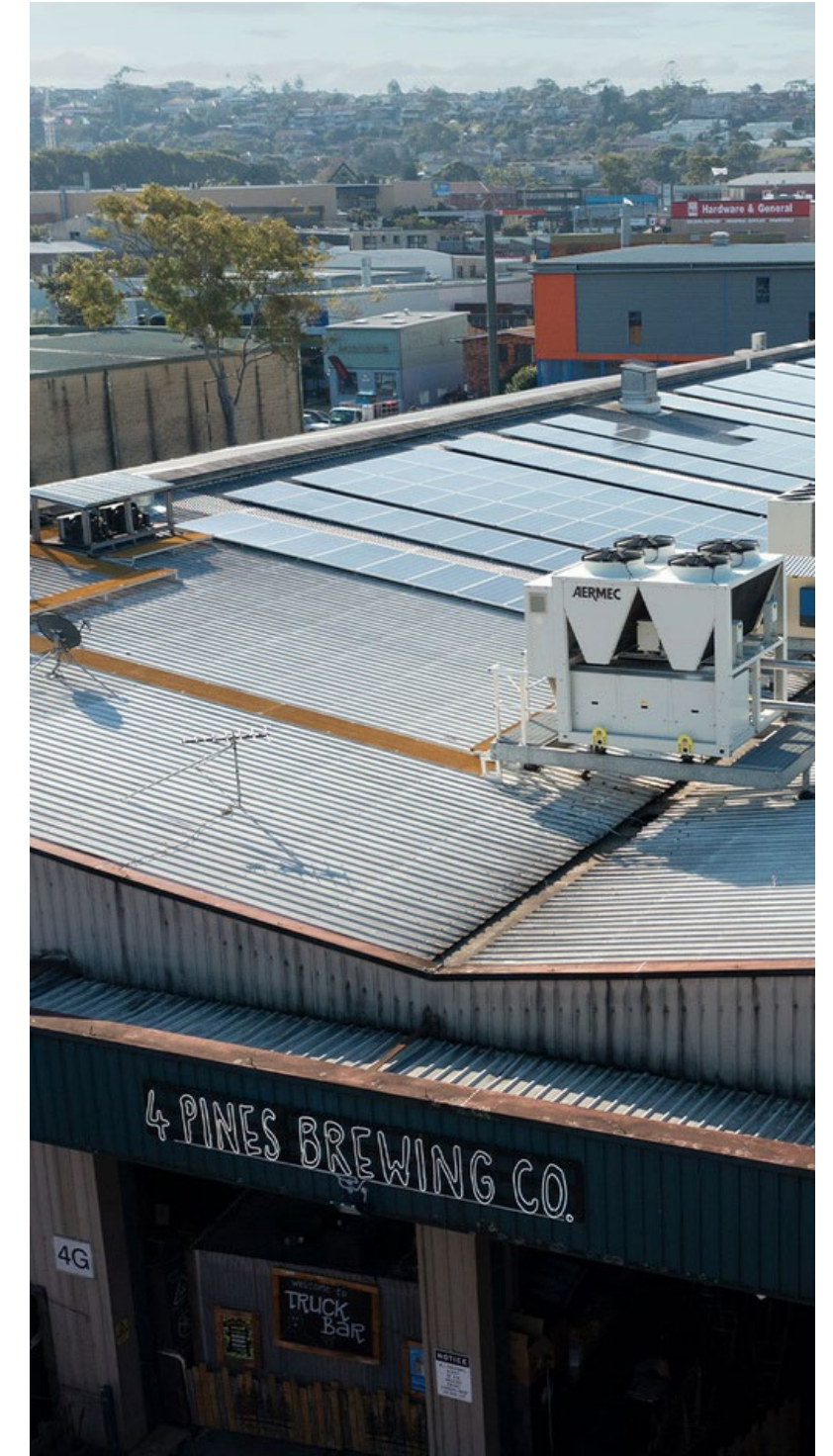
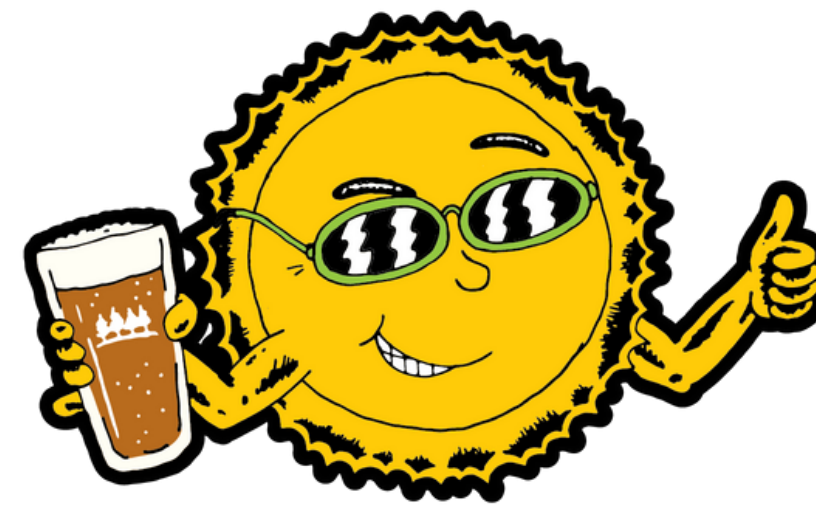
THE INVESTMENT WAS RAISED DURING A 'LAUNCH EVENT' AT THE BREWERY WHERE 100% OF THE FUNDS WERE RAISED WITHIN A FEW HOURS.

ENTER OUR FRIENDS AT SMART COMMERCIAL SOLAR WHO TRANSFORMED OUR HQ INTO A RENEWABLE ENERGY HAVEN. A PORTION OF THE ELECTRICITY USED IN OUR BREWERY, PACKING LINE, AND OFFICE SPACES IS POWERED WITH THE MIGHTY FORCE OF THE SUN.

THROUGH A POWER PURCHASE AGREEMENT (PPA) WITH SMART COMMERCIAL SOLAR, WE'RE PAYING FOR THE ELECTRICITY WE USE FOR TEN YEARS POST INSTALLATION, AND THE PROCEEDS ARE FLOWING RIGHT BACK INTO THE POCKETS OF THE SOLAR INVESTORS.

IT WASN'T JUST ABOUT ENERGY; IT WAS ABOUT CREATING STRONGER BONDS WITH OUR AWESOME COMMUNITY WHO'VE ALWAYS HAD OUT BACKS.

AS PART OF THE SOLAR INSTALL, A MONITORING DEVICE WAS ATTACHED TO THE BREWERIES METER, THIS COLLECTS AND DISPLAYS REAL-TIME CONSUMPTION AND GENERATION DATA. THIS IS VERY VALUABLE AS IT ALLOWS US TO FURTHER IMPROVE ENERGY BEHAVIOURS AND FIND EFFICIENCIES.



RENEWABLE POWER PURCHASING



OUR PLEDGE:

IN 2018, WE MADE A PROMISE TO SHIFT TO RENEWABLE ENERGY SOURCES FOR ALL OUR OWNED AND OPERATED 4 PINES BREWERIES AND VENUES BY 2025. FAST FORWARD TO 2020, AND WE TURNED THAT PLEDGE INTO A REALITY WHERE PURCHASING ELECTRICAL ENERGY IS WITHIN OUR CONTROL AT OUR 4 PINES OWNED & OPERATED SITES ON SYDNEY'S NORTHERN BEACHES.

POWERFUL PARTNERSHIPS:

WE DIDN'T JUST DABBLE; WE WENT ALL IN. WE INKED 10-YEAR POWER PURCHASE AGREEMENTS (PPAS) WITH FLOW POWER. NOW, WHEN WE DRAW ELECTRICAL ENERGY FROM THE GRID AT OUR SYDNEY NORTHERN BEACHES SITES, IT'S RESTORED BACK INTO THE GRID VIA THE SAPPHIRE WIND FARM AND THE BOMEN SOLAR FARM.

SAPPHIRE WIND FARM:

NESTLED ON NGARABAL COUNTRY, 18KM WEST OF GLEN INNES, THIS FARM IS A WIND ENERGY WIZARD. AS THE LARGEST OPERATIONAL WIND FARM IN NEW SOUTH WALES, IT'S NOT JUST GENERATING POWER; IT'S MAKING A STATEMENT FOR CLEAN ENERGY.

BOMEN SOLAR FARM:

A 100-MEGAWATT SOLAR FARM ON WIRADJURI LAND, JUST 10 KM NORTH-EAST OF THE WAGGA WAGGA CITY CENTRE. IT'S TURNING SUNLIGHT INTO ELECTRICITY WITH A SIDE OF POSITIVE IMPACT.

THE POWER OF PPAS:

THOSE 10-YEAR PPAS WITH FLOW POWER AREN'T JUST CONTRACTS; THEY'RE COMMITMENTS TO SUSTAINABILITY. BY LOCKING IN THESE AGREEMENTS, WE'RE NOT ONLY ACCESSING RENEWABLE ENERGY BUT ALSO SUPPORTING THE GROWTH AND IMPACT OF WIND AND SOLAR FARMS. NOW THAT'S SOME POSITIVE ENERGY!

WHAT IT MEANS FOR YOU:

WHEN YOU ENJOY A COLD ONE AT OUR SYDNEY NORTHERN BEACHES VENUES, KNOW THAT THE ENERGY POWERING YOUR GOOD TIMES IS COMING STRAIGHT FROM THE WIND AND THE SUN. IT'S NOT JUST ABOUT MAKING GOOD BEER; IT'S ABOUT DOING IT IN A WAY THAT'S KIND TO THE PLANET.



KEEPING THE GLOBAL WARMING VIBES AT A CHILL 1.5 DEGREES IS A BIG ASK, BUT WE'RE ALL IN THIS TOGETHER. WANNA DO YOUR BIT WITHOUT BREAKING A SWEAT? EASY PEASY - HOP ON THE RENEWABLE ENERGY TRAIN!

IF SOLAR PANELS AREN'T YOUR JAM, NO WORRIES. SNAG AN ENERGY PROVIDER DISHING OUT 100% RENEWABLE ELECTRICAL ENERGY.

ELECTRIC VEHICLE CHARGING



ELECTRIC VEHICLE CHARGING AT 4 PINES BROOKVALE HQ.

WHEN YOU SWING BY, YOU CAN ALSO POWER UP YOUR ELECTRIC RIDE HASSLE-FREE, SATISFYING YOUR TASTE BUDS WITH A MEAL & AN ULTRA LOW WHILST ENSURING YOUR ELECTRIC RIDE IS READY FOR THE NEXT ADVENTURE.

THE 4 PINES ELECTRIC VEHICLE CHARGING STATION IS HERE FOR ALL THE FOODIES, LOCALS, AND EV ENTHUSIASTS.



EV ADDED TO THE FLEET.

WE'VE ALSO RECENTLY ADDED AN EV TO OUR FLEET, THE PLAN IS TO TRIAL IT WITH OUR TEAM, EXPLORE THE CHALLENGES AND BENEFITS AND WORK TOWARDS INTRODUCING MORE IN THE FUTURE.

WE WANT TO ENCOURAGE OUR TEAM & LOCAL COMMUNITY TO MAKE THE SWITCH AS ULTIMATELY CHOOSING AN EV CONTRIBUTES TO CLEANER AIR AND REDUCES HARMFUL EMISSIONS.

GOOD BEER THAT GIVES BACK PROGRAM

WE TEAM UP WITH LIKE MINDED, PLANET LOVIN' BUSINESSES TO RELEASE LIMITED EDITION BEERS THAT TASTE GREAT AND GIVE BACK.

ALL OUR BEERS NOW PROUDLY CARRY THE 1% FOR THE PLANET BADGE, MEANING 1% OF NET SALES REVENUE GOES TO SUPPORTING NON-PROFIT ORGANISATIONS DEDICATED TO HELPING OUR PLANET. WE LIKE TO THINK OF THIS CONTRIBUTION AS OUR "PLANET TAX". IT'S OUR 1% FOR THE PLANET FUND, THAT ALSO HELPS US DELIVER BEER WITH PURPOSE...

THERE ARE SO MANY INSPIRING COMPANIES INCLUDING OUR B CORP CERTIFIED FRIENDS & FELLOW MEMBERS OF 1% FOR THE PLANET THAT WE WANT TO CELEBRATE. AND SO, WE CREATED THE GOOD BEER THAT GIVES BACK PROGRAM: TO DROP SOME SERIOUSLY EPIC, TASTE-BUD-TICKLING BREWS, THAT NOT ONLY TASTE GOOD - BUT DO GOOD.

BUT IT'S NOT JUST ABOUT THE BEER; IT'S ABOUT EDUCATION AND IMPACT.

WE'RE ALL ABOUT SHARING THE AMAZING INITIATIVES THESE BUSINESSES ARE LEADING, MAKING IT EASY FOR THE EVERYDAY BEER LOVER TO DIVE INTO SOME INSPIRED & IMPACTFUL STORIES. SOME OF THE BEST CONVOS HAPPEN OVER A COLD ONE AROUND THE BBQ AND WE'RE ALL ABOUT CREATING MORE OPPORTUNITIES FOR THOSE EPIC CONVERSATIONS TO TAKE PLACE.



GOOD BEER THAT GIVES BACK 1.0



BEN & JERRY'S COLLAB

IN 2021, BEN & JERRY'S AND 4 PINES RELEASED A LIMITED-EDITION CHOCOLATE CHIP COOKIE DOUGH NITRO BEER - A BEER THAT DIDN'T JUST TASTE GOOD BUT ALSO GAVE BACK.

WITH BEN & JERRY'S HAVING A LONG HISTORY OF CLIMATE ACTIVISM, IT WAS A NO BRAINER THAT OUR TWO SUN-LOVING COMPANIES CAME TOGETHER TO CREATE GOOD.

THIS 'GOOD BEER THAT GIVES BACK', CREATED THE OPPORTUNITY TO HELP COMMUNITY ORGANISATIONS ACCESS RENEWABLE ENERGY VIA A REVOLVING FUND FOR ROOFTOP SOLAR INSTALLATIONS.

A COLLABORATION BETWEEN 4 PINES WITH ENOVA COMMUNITY ENERGY, AND 'COREM' ENSURED THE LONG-TERM SUCCESS OF THIS PROJECT.

4 PINES CONTRIBUTED \$30K TO COREM'S 'REVOLVING COMMUNITY ENERGY FUND'. COMMUNITY GROUPS THEN APPLY FOR A GRANT, WITH FUNDS COVERING THE COST OF THE INSTALLATION. THE GROUP BECOMES A CUSTOMER OF COREM, AND THE 'REVOLVING' PART OF THE FUND MEANS ENERGY SAVINGS FROM THE SOLAR INSTALLATION ARE USED TO REPAY THE COST OF INSTALL (LIKE A NO-INTEREST LOAN).

THE FUNDS REPAID OVER THE NEXT TEN YEARS WILL BE FUNNELLED TO OTHER COMMUNITY GROUPS, FACILITATING MORE SOLAR PROJECTS IN THE FUTURE.



GOOD BEER THAT GIVES BACK 2.0



SEAFORREST COLLAB



WHY IS THERE SEAWEEED IN MY BEER?

THIS IS A TALE OF COWS, BEER, SEAWEEED, METHANE & GLOBAL WARMING. HOW ON EARTH DO ALL THESE RELATE? IT ALL STARTED WITH TWO PLANET LOVIN' COMPANIES, SEA FOREST & 4 PINES.

THE SEAFORREST TEAM IS DEDICATED TO FIGHTING CLIMATE CHANGE BY BEING THE FIRST IN THE WORLD TO CULTIVATE ASPARAGOPSIS (A RED SEAWEEED NATIVE TO AUSTRALIA) AT A COMMERCIAL SCALE.

IN RESPONSE TO CLIMATE CHANGE, SEAFORREST HAVE DEVELOPED A METHANE BUSTING, BIOTECHNOLOGY THAT COULD HELP SAVE THE WORLD! USING NATIVE SEAWEEED 'ASPARAGOPSIS', SEAFORREST HAVE DEVELOPED A CATTLE FEED SUPPLEMENT, SEAFEED (TM).

EXTENSIVE RESEARCH HAS SHOWN THAT SEAFEED (TM) WHEN FED DAILY TO CATTLE AT A VERY LOW DOSE, MUCH LIKE TAKING A VITAMIN C TABLET, PREVENTS THE FORMATION OF METHANE IN THE FINAL STAGE OF DIGESTION. IN DOING SO, DIVERTING THAT ENERGY, WHICH WOULD HAVE BEEN EXPELLED AS A GAS TOWARDS MAKING MORE NUTRIENTS AVAILABLE TO THE ANIMAL.

LIVESTOCK WHOSE DIETS CONTAIN 0.2% OF SEAFEED (TM) SUPPLEMENT, WILL HAVE METHANE REDUCTIONS OF UP TO 98%. (AROUND 15% OF GLOBAL GREENHOUSE EMISSIONS COME FROM LIVESTOCK PRODUCTION).

SEAFORREST HAVE TEAMED UP WITH THE UNIVERSITY OF TASMANIA'S INSTITUTE FOR MARINE AND ANTARCTIC STUDIES (IMAS) TO CREATE THE SEA FOREST FOUNDATION, SPECIFICALLY TO PROTECT AND RESTORE LOCAL MARINE HABITATS LIKE THE GIANT KELP FORESTS. THE KELP FORESTS ARE A VITAL PART OF THE TASMANIAN MARINE ECOSYSTEM AS WELL AS THE GREAT SOUTHERN REEF AND CREATE UNDERWATER FORESTS THAT ARE HOME TO HUNDREDS OF OTHER UNIQUE SPECIES.

4 PINES DONATED \$15K TO THE SEAFORREST FOUNDATION TO HELP THEM RESTORE & PROTECT TASMANIA'S GIANT KELP FORESTS.

"MANY IMPORTANT CONVERSATIONS HAVE TAKEN PLACE OVER A BEER AND THROUGH THE COLLABORATION BETWEEN 4 PINES AND SEA FOREST, WE ARE EXCITED TO EMPOWER BEER DRINKERS TO LEARN MORE ABOUT THE ROLE METHANE PLAYS IN THE CLIMATE CHALLENGE". SAM ELSOM, SEAFORREST'S CEO

WE MADE A PINK BEER



FOR TWO YEARS RUNNING, WE'VE TURNED OUR PACIFIC ALE PINK IN SUPPORT OF THE MCGRATH FOUNDATION.

OUR CLEVER BREWERS PUT A DISTINCTIVE ROSE-COLOURED TWIST ON OUR BIGGEST BEER TO CREATE '4 PINES PINK BEER' IN SUPPORT OF THE MCGRATH FOUNDATION.

AUSSIE PUBLICANS ALSO JUMPED ON BOARD TO SUPPORT THIS FANTASTIC INITIATIVE, WITH THE SPECIAL-EDITION BEVERAGE MADE AVAILABLE FOR PURCHASE AT VARIOUS BARS AND PUBS ACROSS SYDNEY, MELBOURNE & BRISBANE INCLUDING MERIVALE OUTLETS AT THE SYDNEY CRICKET GROUND DURING SUMMER.

WE'VE DONATED ALL PROFITS GENERATED BY THE LIMITED EDITION BEER TO THE MCGRATH FOUNDATION TO SUPPORT THEIR ONGOING EFFORTS TO FUND 250 MCGRATH BREAST CARE NURSES ACROSS AUSTRALIA THIS YEAR.

MCGRATH FOUNDATION AMBASSADOR & DIRECTOR, TRACY BEVAN SAYS, "IT'S ONLY THROUGH THE SUPPORT OF AMAZING PARTNERS LIKE 4 PINES WHO ARE GENEROUSLY DONATING THAT WE CAN CONTINUE TO FUND OUR MCGRATH BREAST CARE NURSES AND WORK TOWARDS OUR MISSION OF ENSURING THAT NO ONE WITH BREAST CANCER MISSES OUT ON THE CARE OF A BREAST CARE NURSE".



WE'RE A GREAT PLACE TO WORK

GOOD BEER NEEDS GOOD PEOPLE. WE STRIVE TO ENSURE THAT OUR PEOPLE ARE HAPPY & SAFE & WE'RE COMMITTED TO HELPING OUR PEOPLE BE THE BEST THEY CAN BE. SINCE 2018 WE'VE BEEN CERTIFIED AS A 'GREAT PLACE TO WORK'.

WE HAD A FEELING THAT WE WERE A GOOD PLACE TO WORK, BUT WE DIDN'T WANT TO ASSUME. SO, WE SIGNED UP THIRD PARTY CERTIFIERS, 'GREAT PLACE TO WORK' AND HAD OUR TEAM PROVIDE THEIR ANONYMOUS FEEDBACK. ONCE RECEIVED & COLLATED, THE RESULTS ARE THEN BENCHMARKED WITH OTHER INDUSTRIES & BUSINESSES ACROSS AUSTRALIA.

WE'RE STOKED TO BE UP THERE WITH THE VERY BEST EMPLOYERS IN AUSTRALIA.

AT 4 PINES, WE KNOW WE NEED GREAT PEOPLE TO MAKE GREAT BEER AND THE FROTH FACTOR IS HIGH KNOWING THAT WE'RE HEADING IN THE RIGHT DIRECTION TO KEEP OUR PEOPLE HAPPY, SAFE AND GROWING.

4 PINES EMPLOYS AROUND 200 PEOPLE, FROM OUR BREWERIES, PACKAGING LINE, HOSPITALITY VENUES, FINANCE & ADMIN, COMMUNITY & CULTURE, BEER LOVERS ON THE ROAD & OUR MARKETING TEAM. WE'RE A PRETTY ECLECTIC BUNCH, WHO SUPPORT ONE ANOTHER AND GENUINELY CARE ABOUT EACH OTHER.

OUR RECENT GPTW FEEDBACK SHOWED THAT 89% OF OUR EMPLOYEES WOULD SAY THAT '4 PINES IS A GREAT PLACE TO WORK', & 94% OF EMPLOYEES 'FEEL SAFE AT WORK'.

OUR SENIOR LEADERSHIP TEAM ARE ACTIVE IN RESPONDING TO FEEDBACK AND MAKING CHANGES TO ENSURE OUR STAFF CONTINUE TO ENJOY WORKING FOR US.



OUR PEOPLE LOVE DOING GOOD STUFF

BEACH CLEANS

OUR O.G HOME IN MANLY IS NESTLED BETWEEN THE HARBOUR, THE BEACH & NATIONAL PARKS. SO IT'S A NO BRAINER THAT PROTECTING OUR WATERWAYS AND ENVIRONMENT IS INGRAINED IN OUR CULTURE.

BEACH CLEANS ARE AN IMPORTANT WAY FOR OUR TEAM TO CONNECT WITH ONE ANOTHER & THE LANDS WE LIVE ON.

ROLLING UP OUR SLEEVES, DONNING SOME GLOVES & PUTTING OLD MALT BAGS TO REUSE MEANS THAT WE PAY OUR PART COLLECTING RUBBISH THAT LINES OUR LOCAL WATERWAYS.



ON SITE PERMACULTURE GARDEN, WORM FARM & COMPOSTING

AN EMPLOYEE LED INITIATIVE HAS SEEN OUR VERY OWN PRODUCTIVE GREEN GARDENS THRIVE AT BROOKVALE HQ.

OUR LEGENDARY LONG TERM PLANET HEALER, GARRETT SHERMAN, IS CUSTODIAN OF THESE PERMACULTURE GARDENS. HE NUTURES THEM SO THAT WE HAVE ACCESS TO FRESH HERBS, TINY TOMATOES AND CHILLI TO ADD TO OUR MEALS.

BEAU, ANOTHER BREW TEAM LEGEND, SET UP WORM FARMS SO THAT OUR BREWTEAM CAN COMPOST THEIR FOOD SCRAPS.



NATIVE BEE HIVES

HELPING NATIVE AUSTRALIAN BEES IS JUST ANOTHER SMALL WAY TO SUPPORT BIODIVERSITY AND THE HEALTH OF OUR ECOSYSTEMS.

WE HAVE TWO NATIVE STINGLESS BEE HIVES AT OUR PERMACULTURE GARDEN. THE NATIVE BEES PLAY A CRUCIAL ROLE IN FERTILISING PLANTS, WHICH IS ESSENTIAL FOR THE REPRODUCTION OF MANY NATIVE FLOWERS, FRUITS, AND VEGGIES.

AND A PERK OF SUPPORTING NATIVE STINGLESS BEE'S? THERE'S NO STINGS ATTACHED. THESE GUYS CAN'T HARM YOU.



TEAM DAY VOLUNTEERING WITH LOCAL LANDCARE GROUP

WE LOVE CREATING OPPORTUNITIES FOR OUR TEAM TO GET THEIR HANDS DIRTY! THERE ARE MANY LOCAL LANDCARE GROUPS AND ENVIRONMENTAL ORGANISATIONS THAT ARE ITCHING TO HAVE THE HELP OF DEDICATED VOLUNTEERS.

CREW FROM 4 PINES VOLUNTEERED WITH FRIENDS OF MANLY LAGOON, HELPING TO REMOVE WEEDS BEFORE GETTING DIRT UNDER THEIR NAILS & PLANTING TREES, SHRUBS & GROUNDCOVERS.

SEVERAL OF THE TEAM HAVE SINCE BECOME MEMBERS AND REGULARLY ATTEND THE VOLUNTEER DAYS.



SO DO OUR LEADERSHIP TEAM

CLOSE TO \$50,000 RAISED FOR CHILDREN'S CANCER INSTITUTE AS PART OF CEO DARE TO CURE. THIS CONTRIBUTION IS HELPING TO FUEL THEIR MISSION TO CURE CANCER IN KIDS.

DURING 2023 WE HOSTED THE GOOD VIBES FUNDRAISER EVENT AT TRUCK BAR WHICH HELPED TO RAISE ALMOST \$50,000 FOR THE CHILDREN'S CANCER INSTITUTE!

A FUN EVENING CONNECTING OUR COMMUNITY TOGETHER, RESPONSIBLY CLINKING BEERS, AND SCORING FANTASTIC AUCTION ITEMS GENEROUSLY PROVIDED BY OUR AWESOME BUSINESS PARTNERS AND FRIENDS.

THE CHILDREN'S CANCER INSTITUTE IS AN INDEPENDENT MEDICAL RESEARCH INSTITUTE IN AUSTRALIA DEDICATED SOLELY TO FIGHTING AGAINST CHILDHOOD CANCER. WITH THEIR CUTTING-EDGE FACILITIES, BRILLIANT MINDS, AND UNYIELDING DETERMINATION, THEY'VE BEEN MAKING HUGE PROGRESS TO IMPROVE THE LIVES OF CHILDREN DIAGNOSED WITH CANCER.

SOME OF OUR LEADERSHIP TEAM DIDN'T JUST STOP AT FUNDRAISING; THEY JUMPED INTO THE DARE TO CURE TEAM FITNESS CHALLENGE, WHICH IS ALL ABOUT RAISING FUNDS FOR GROUNDBREAKING RESEARCH TO FIND A CURE FOR CHILDREN'S CANCER.



HOSPO & COMMUNITY

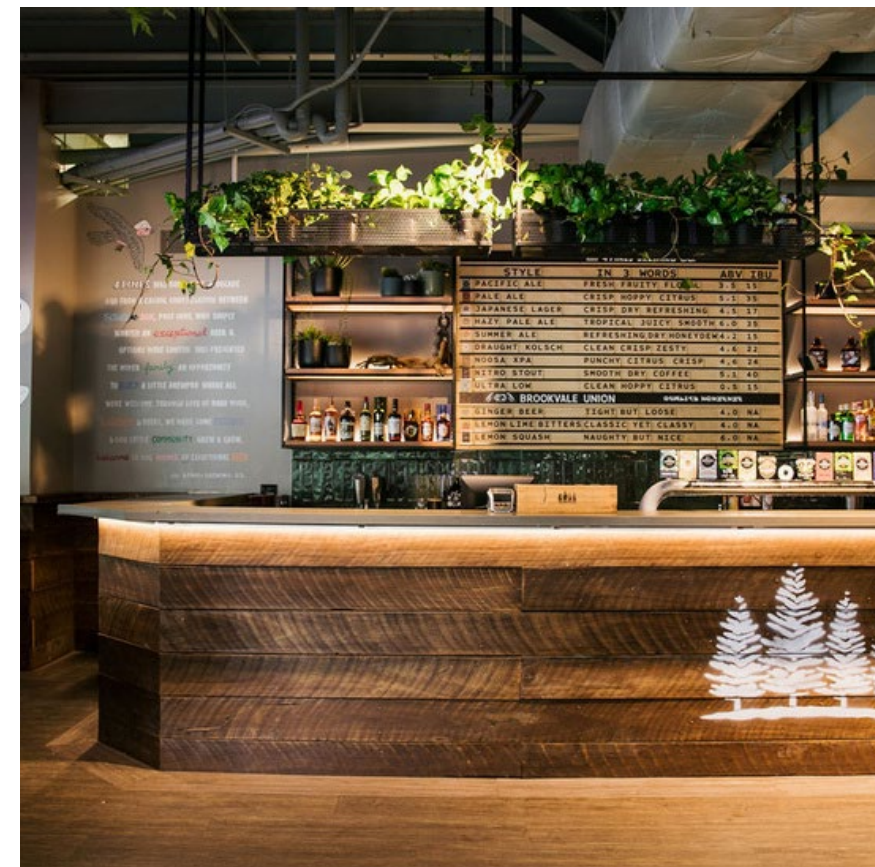
**HOSPITALITY IS AT THE HEART OF 4 PINES.
IT'S IN OUR DNA.**

WE'RE NOT JUST ABOUT MAKING BEER FOR PEOPLE TO ENJOY, 4 PINES IS ABOUT A WHOLE LOT MORE THAN THAT.

IN 2008, OUR FOUNDERS HAD JUST ONE BREWPUB IN MANLY. THE EXPERIENCE OF THEIR CUSTOMERS WAS THE CENTRE OF THE 4 PINES UNIVERSE. GENUINE, WARM, SERVICE, A DELICIOUS FEED & A CRACKING PINT OF LOVINGLY CRAFTED BEER WAS THE START, MIDDLE & END OF EVERYTHING THAT THEY CARED ABOUT.

OVER THE YEARS, LOTS HAS CHANGED. WE'VE OPENED MORE OF OUR OWN VENUES & PARTNERED WITH OTHER GREAT HOSPITALITY OPERATORS TO DELIVER THE 4 PINES EXPERIENCE. BUT WE'VE NEVER LOST SIGHT OF WHERE WE BEGAN OR HOW IMPORTANT AN IMMERSIVE, CUSTOMER FOCUSED HOSPITALITY EXPERIENCE CAN BE.

OUR VENUES PLAY AN ACTIVE ROLE IN THE COMMUNITIES THAT WE OPERATE IN THROUGH IN VENUE EVENTS AND OUR SPONSORSHIP PROGRAM. EACH COMMUNITY GROUP PROVIDES OUR VENUES THE UNIQUE OPPORTUNITY TO SUPPORT THEIR GOALS, WHILST DEEPENING OUR CONNECTION BETWEEN THE LOCALS AND OUR STAFF.



THERE'S HEAPS OF GOOD STUFF HAPPENING IN OUR VENUES

INTERNATIONAL NURSES DAY

WE'VE BEEN SHOWING OUR LOVE TO NURSES ON INTERNATIONAL NURSES DAY SINCE 2020, LAST YEAR WE GAVE THEM A FREE SIX PACK.

THIS INITIATIVE, ORIGINALLY CREATED BEFORE COVID, GAINED EVEN MORE SIGNIFICANCE DURING THE PANDEMIC AS NURSES WORK TIRELESSLY IN A STRESSED HEALTH SYSTEM.

IT'S OUR WAY OF SAYING A BIG THANK YOU TO THE FRONTLINE HEROES. WE'VE SEEN NURSES IN THEIR SCRUBS ENJOYING THIS SMALL TOKEN OF APPRECIATION ACROSS ALL OUR VENUES ON THE DAY. CHEERS TO OUR AMAZING NURSES!

BROOKVALE SOLAR ALLIANCE POWERED BY THE SUN

IN 2022, WE HOSTED THE LAUNCH OF POWERHOUSE BROOKVALE.

THE INTENTION - TO TRANSFORM BROOKVALE INTO AUSTRALIA'S FIRST URBAN RENEWABLE ENERGY ZONE.

INITIATED BY THE NON-PROFIT RENEWABLE ENERGY PROTAGONISTS, SOLAR ALLIANCE, POWERHOUSE BROOKVALE IS AN ALLIANCE OF ENVIRONMENTALISTS, LOCAL BUSINESSES AND POLITICIANS.

BEACON HILL RURAL FIRE BRIGADE

TAKING CARE OF THOSE THAT TAKE CARE OF US.

THE BEACON HILL RURAL FIRE BRIGADE ARE A TEAM OF LEGENDARY VOLUNTEERS, DEDICATING THEIR TIME & ENERGY TO ENSURE THAT OUR LOCAL NEIGHBOURHOOD IS SAFE.

WE'RE PLEASED TO SUPPORT THEM. IT'S EVERY DAY HEROES LIKE THESE THAT INSPIRE US!

CELEBRATING COASTCARE WEEK ACROSS 4 PINES VENUES

IN 2023, 4 PINES SAID A BIG THANK YOU TO LOCAL LANDCARE & COASTCARE COMMUNITY GROUPS FOR THEIR PASSION & DEDICATION TO PROTECT OUR SHARED BACKYARDS, BY SHOUTING THEM A FREE PINT OF SPECIALLY BREWED COASTCARE ALE.

COASTCARE ALE WAS BREWED USING ALL AUSSIE INGREDIENTS & HOPS FROM THE REGENERATIVELY RUN RYEFIELD PROPERTY WHERE WE PREVIOUSLY PLANTED 3 000 NATIVE SHRUBS, TREES & GRASSES.

THANKS TO THE COASTCARE VOLUNTEERS FOR HELPING TO PROTECT & RESTORE BIODIVERSITY FOR NOW & FUTURE GENERATIONS TO COME.



WE'RE ON A JOURNEY



DON'T LET THE PERFECT, GET IN THE WAY OF THE GOOD.

THIS HAS BEEN OUR HIGHLIGHT REEL, AND THERE'S PLENTY MORE PROJECTS OUR TEAM HAVE BEEN INVOLVED IN THAT HAVEN'T MADE IT ONTO THESE PAGES. THOUGH WE'VE HAD MANY WINS, WE'RE NOT PERFECT, WE'RE ON A CONTINUOUS JOURNEY OF IMPROVEMENT. ALONG THE WAY WE'VE LEARNT LOTS OF LESSONS & KNOW THERE'S PLENTY MORE TO LEARN.

QUITE OFTEN WE'RE ASKED, 'WHERE CAN I START?', OUR RESPONSE: DON'T LET PERFECT, GET IN THE WAY OF GOOD. JUST GET STARTED. GO FOR THE LOW HANGING FRUIT. THE SMALL ACTIONS YOU CAN BEGIN TODAY. TAKE OTHERS ON YOUR JOURNEY & BE SURE TO CELEBRATE YOUR WINS.

THEY KEY TO ALL THIS - MAKE SURE YOU ARE HAVING FUN WHILST DOING IT!

IT CAN SEEM LIKE A LOT, WE GET IT, BUT DOING GOOD STUFF, COLLECTIVELY CAN ADD UP TO GREAT STUFF.

WE ARE PROUD OF THE GOOD STUFF WE HAVE ACHIEVED IN COLLABORATION WITH LOCAL COMMUNITIES AND OUR PARTNERS, BUT THERE IS LOTS MORE FOR US TO DO!

HAVE QUESTIONS FOR US? WANT GET INVOLVED? DON'T KNOW WHERE TO START? SHOOT US AN EMAIL AT THE ADDRESS BELOW. WHETHER IT'S BECOMING A B CORP OR A MEMBER OF 1% FOR THE PLANET, DOING A BEACH CLEAN OR HELPING US PLANT TREES, WE'RE HAPPY TO LEND SOME KNOWLEDGE OR A CHANCE TO GET YOUR HANDS DIRTY. WE HAVE THE UNIQUE PRIVILEGE OF BEING ABLE TO SHARE OUR EXPERIENCE. MOST OF ALL, WE LOVE CHATTING ABOUT IT! SO DON'T BE SHY, REACH OUT.

GOODSTUFF@4PINESBEER.COM.AU

CHEERS!



**CHEERS TO ALL
THAT GOOD STUFF!**

